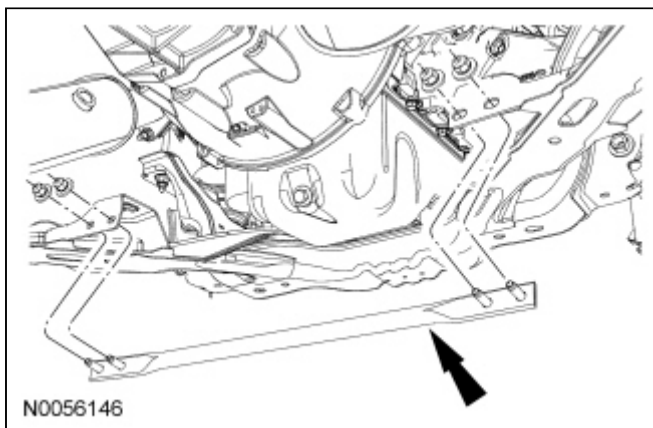
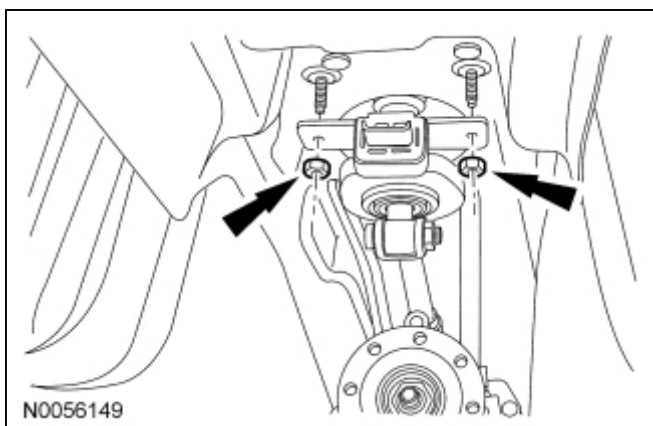


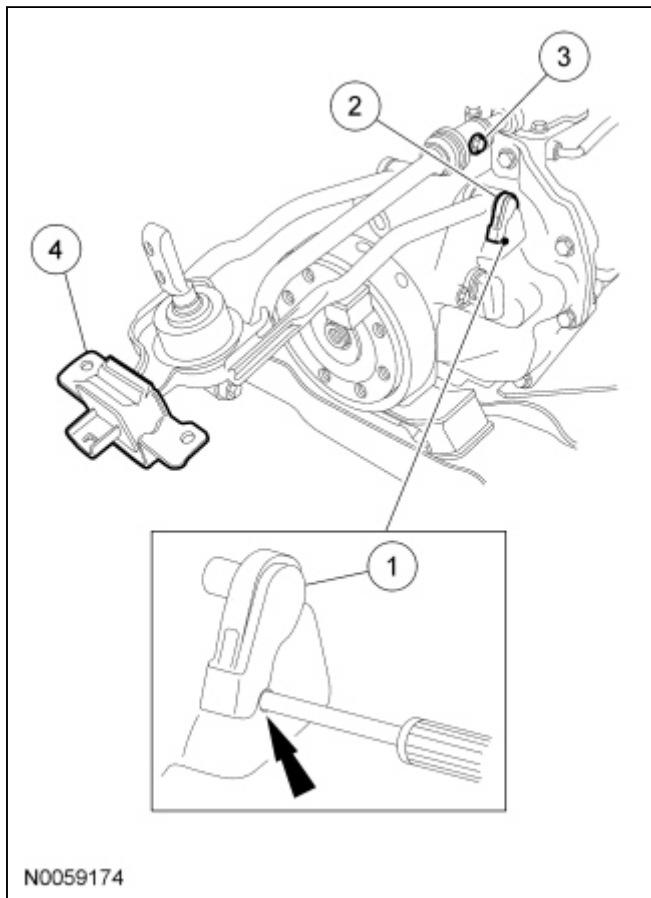
2. Remove the upper gearshift lever bolts and the upper gearshift lever.
 - To install, tighten to 35 Nm (26 lb-ft).
3. With the vehicle in NEUTRAL, position it on a hoist. For additional information, refer to [Section 100-02](#).
4. Remove the driveshaft. For additional information, refer to [Section 205-01](#).
5. Remove the 4 subframe cross brace bolts and the subframe cross brace.
 - To install, tighten to 48 Nm (35 lb-ft).



6. Using a suitable transmission jack, support the transmission.
7. Remove the 4 rear transmission mount outer bolts.
 - To install, tighten to 63 Nm (46 lb-ft).
8. Lower the transmission.
9. Remove the 2 rear gearshift lever nuts.



10. Remove the gearshift lever assembly.
 1. Insert a pick into the lower hole to unlock the clip.
 2. Rotate the gearshift lever retainers, then remove the retainers.
 3. Remove the gearshift lever bolt.
 4. Remove the gearshift lever assembly from the vehicle.
 - To install, tighten to 40 Nm (30 lb-ft).



11. To install, reverse the removal procedure.
 - Make sure to snap the gearshift lever retainers into the locked position.
 - Carefully position the gearshift lever into the lower shift boot. Make sure the lever is through the boot.

